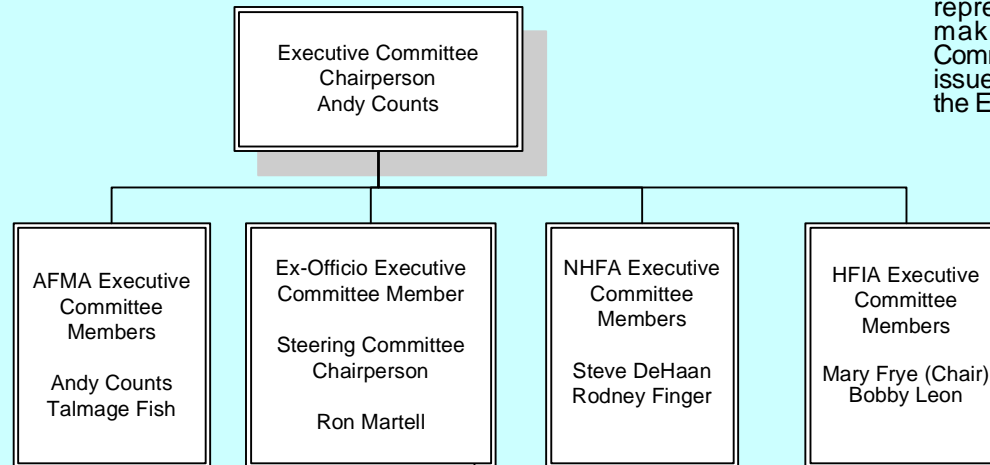


# FIDX

## Organization Chart

The **Executive Committee** will be comprised of three representatives from each Association and the Chairperson of the Steering Committee as an ex-officio member (for a total of ten people). These representatives may be staff persons or member company representatives.

The role of the **Executive Committee** is to represent the Associations, be the policy making body and assist the Steering Committee and Working Group. All funding issues will be considered and approved by the Executive Committee.



The **Steering Committee** will consist of the Chairperson of the Steering Committee and the committee members made up of two representatives from each segment of the supply chain: Retailers, Manufacturers, Suppliers, Upholstery Suppliers, Carriers and Solution Providers (for a total of 13 people).

The role of the **Steering Committee** is to coordinate work on the uncompleted standards, monitor issues that arise with completed standards, and give the Executive committee advice on issues that need direction or support. The Executive Committee will appoint a Chairperson to the Steering Committee to provide leadership to the Steering Committee and to be an ex-officio member of the Executive Committee.

### Supply Chain Segments

#### Retailers

Dwight Ball  
- Rose Furniture  
Mike Coker  
- W.S. Badcock

#### Manufacturers

Rick Killen  
- Thomasville  
Theresa Jaynes  
- Century Furniture

#### Suppliers

Chris Carter  
Leggett & Platt

#### Upholstery Suppliers

Bryan Chambers  
- Mastercraft Fabrics

#### Carriers

Ben Keller  
- MGM

#### Solution Providers

Manoj Nigan  
Exim Technologies  
Geoff Mack  
FurnishNet

The **Working Group** is to establish standards and make any necessary modifications or revisions.

The **Working Group** will be anyone participating in FIDX.